

LEFEBVRE RESERVE

Directions:

- * On Mr. Parnassus Rd., head east toward Millington Green.
- * Continue past Millington Green onto Haywardville Road.
- * Take a right onto Hopyard Road.
- * Take a left onto Foxtown Road.
- * When Foxtown Road ends at the stop sign, continue onto Jones Hill Road.
- * The parking lot for the Reserve is about .20 of a mile on your left.

Permitted Activities:

- ◆ Hiking
- ◆ Nature study
- ◆ Snowshoeing
- ◆ Birding
- ◆ Horseback riding
- ◆ Cross-country skiing
- ◆ Mountain biking

No motorized vehicles are allowed on the property

Report any problems during your visit to the East Haddam Land Use Office. 860 873-5031.

Trail Facts:

- ◇ The red trail is .9 miles long. It is flat and is a loop that will lead one through the beautiful forested areas of the property.
- ◇ The blue trail, which is an additional loop that comes off of the red trail, is .7 miles long. It also winds through the forests. It will take one to near the far boundary of the property with the Nature Conservancy's Burnham Brook Preserve.
- ◇ The orange trail is only 462 feet long but it leads from the blue trail to Jones Hill Road at a point where, if you cross the road and head slightly to your left, you can access the trail to the Devil's Hopyard's overlook.

EAST HADDAM TRAILS

LEFEBVRE RESERVE

72 Jones Hill Road

The 114-acre Lefebvre Reserve is managed by East Haddam's Conservation Commission. It was purchased by the Town of East Haddam and The Nature Conservancy from Edith Lefebvre, who was 100 years old at the time. Monetary assistance also came from a grant from The State of Connecticut and a donation from East Haddam Land Trust. It is much more than the tall canopy of second growth maple, oak and beech, and paddocks of delicate green ferns, it is the home of a dozen historic stone cairns and flocks of wild turkey and mink and raccoons. It is also totally within the Eightmile Wild & Scenic Watershed and the Lyme Forest Block Important Bird Area. The property also is sandwiched between Devil's Hopyard State Park to the north and The Nature Conservancy's Burnham Brook Preserve to the south.

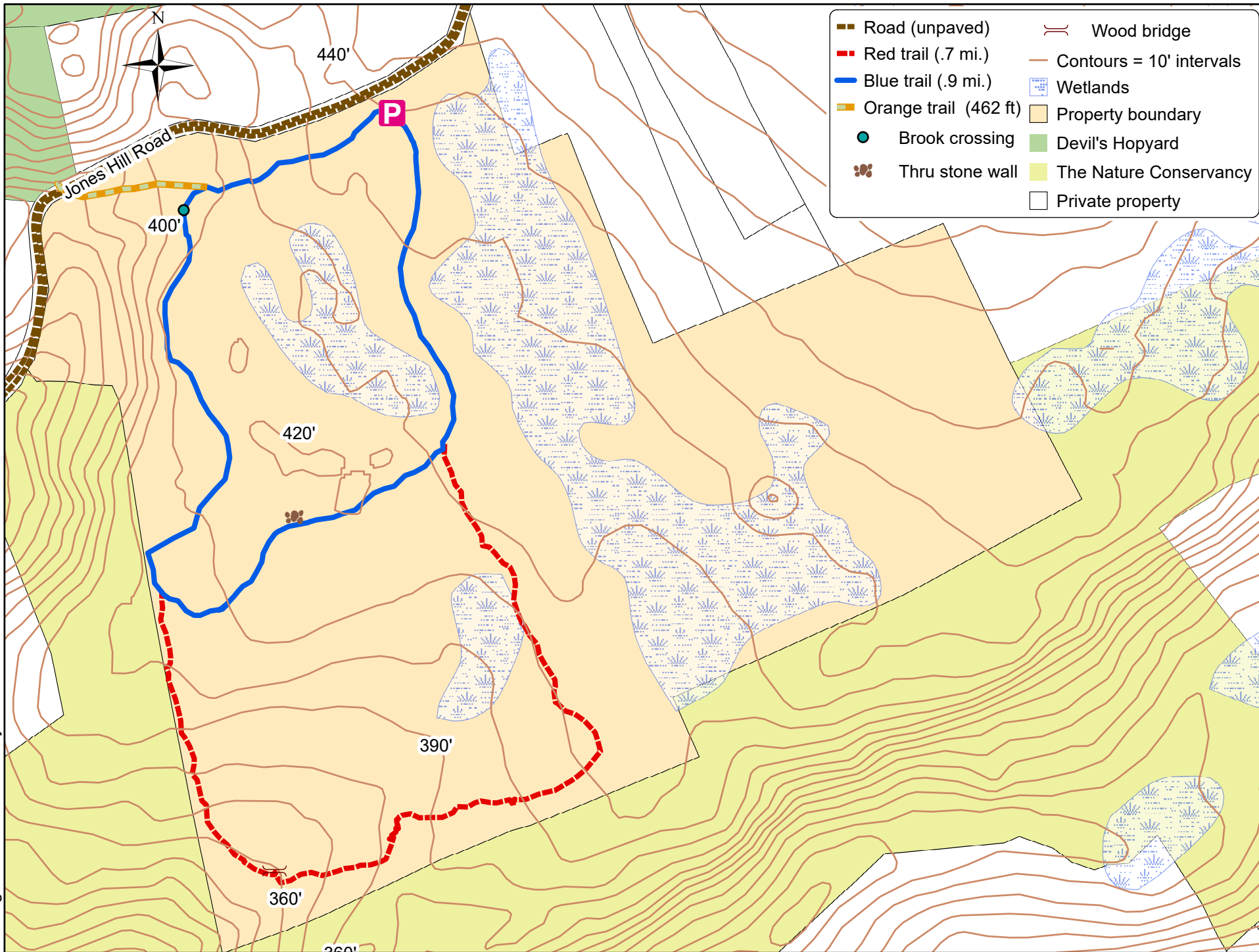


EAST HADDAM
YOUTH AND FAMILY
SERVICES



East Haddam
CONSERVATION
COMMISSION

LEFEBVRE RESERVE



For general reference only

Managed by EAST HADDAM CONSERVATION COMMISSION

